

SOA: les coccinelles nursery school

designboom®

search designboom



architecture

design

art

technology

INTERVIEWS

SUBMISSIONS

COMPETITIONS

DESIGN - AEROBICS

SHOP

28,440 articles

PRODUCT LIBRARY

UPDATES

VIDEO

NEWSLETTER

MOST POPULAR

BRIDGES

SHARE AND PROMOTE YOUR WORK

since 1999, home of design culture, designboom has been the world's first online magazine. we welcome readers to submit projects. [START UPLOADING](#)



original content

SOA: les coccinelles nursery school



37

Tweet

52

Like

62

7

4

Share

- [Stun](#)
- [1](#)

0

feb 13, 2013

first image

'les coccinelles nursery school' by SOA, saint gratien, france

image © [clement guillaume](#)

all images courtesy of SOA

drawing from the french for 'ladybug', 'les coccinelles nursery school' by parisian firm [SOA](#) is a materially sophisticated, high functioning building sited in a quaint green space. situated in a residential northern parisian suburb, the volume of the nursery school appropriates the locally prevalent pitched roof and star-shaped plan. the program called for an environmentally conscious space that could accommodate 45 young children separated by three stages of development. the gestalt of the building lies in the double-height entrance hall which fractures out into the three functional areas of the school; the ground floor is for the eldest and mid-level children, while the youngest are relegated to the first floor. although the entrance hall affords uninhibited views, the glazed southern facade opens into a double height sun room, creating a all-weather covered play area. energetic spaces are counterbalanced by sleeping rooms in the northern section of the school. the building systems are composed sensitively, with linear wooden slats that filter direct sun during the summer months. double wooden skin also gives way to rhythmic apertures that also puncture through the prefabricated metal walls. in lieu of light frame inner construction, the material logic is playfully reversed, with chestnut cladding serving to express stainless steel exterior walls. this inversion architecturally unifies the roof and facade while keeping with the child-like lightness that the program demands.

cat db

02.13.13

schools (98 articles)

SOA (6 articles)

37

Tweet

52

Like

7

- [Stun](#)
- [1](#)

0

name (required)

e-mail (will not be published) (required)

LOG IN VIA



comments policy

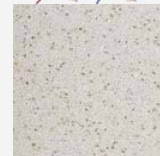
Submit Comment

tips:

- to start a new line press enter
- to create a link type www



Product Library



Category: Bathrooms / Wetrooms

[See all](#)

schools (98 articles)



NLE architects: floating school in makoko

the buoyant school is the first part to a three-phase plan that will create an entirely floating (read more)



woods bagot: KIOSC green school in australia

a sustainability training center for secondary school students uses its very architecture to illustrate (read more)



SOA: les coccinelles nursery school

a parisian nursery school has playfully reversed cladding systems-- linear chestnut slats express (read more)



estudio fernandez-vivancos + abaloslopis: can felix nursery

the infants' nursery is composed of individual structures that together form an inviting and tranquil (read more)






the double height entrance hall organizes the rest of the program
image © clément guillaume



chestnut grates encase a stainless steel building envelope
image © clément guillaume



panyaden school by 24h-architecture, thailand
the ecologically friendly bamboo school uses a buddhist approach to teach primary students the classic (read more)

 SQUARESPACE

CREATE AN
EXCEPTIONAL WEBSITE

TRY IT FREE

POPULAR TODAY ARCHITECTURE



la proyecteria: calderon de la barca 71, mexico
seamlessly interlocked concrete masses contain various apartments with unique layouts, views, and >>



the transforming landscape of silicon valley
gensler's release of two renderings for the NVIDIA headquarters is the latest in a series of large-scale >>



lode architecture: g house, normandy, france
at the mouth of seine sits the slate-shingled graphic silhouette of a holiday home of simple volumes, >>



eden apartments by tony owen partners
the urban infill project is located in a varied and complex part of the sydney cityscape - visible from >>



aart architects: hindsgavl nature reserve, denmark
large windows and doors create a threshold between the interior and exterior, a relationship >>

SOA



SOA: les coccinelles nursery school
a parisian nursery school has playfully reversed cladding systems-- linear chestnut slats express >>



SOA: thermopyles - social housing + transition house
the site, flanked by two contrasting urban contexts, responds and integrates both extremes accommodating >>



SOA: ferme musicale
an urban vertical farm typology that exposes new techniques to becoming 'green' in a symbiotic >>



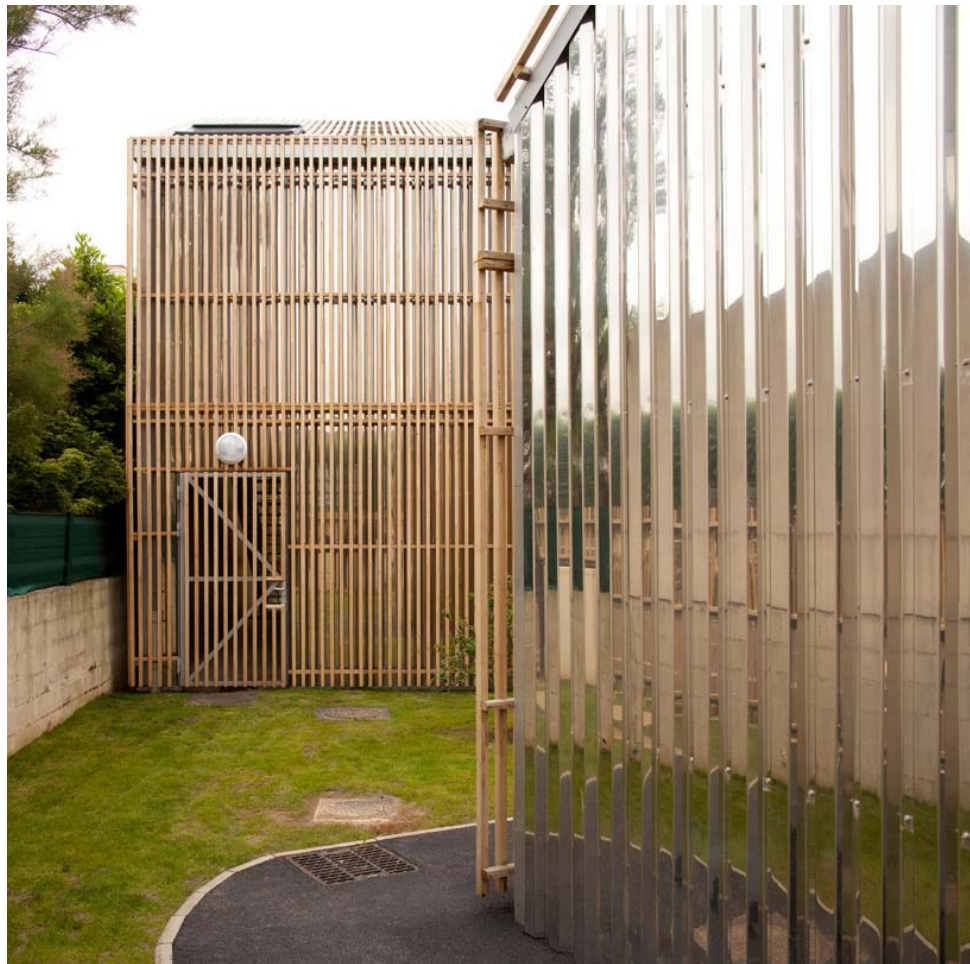
SOA: urbanana
an intensive banana farm in a medium-sized 'haussmann'-period parisian building in a concrete jungle.



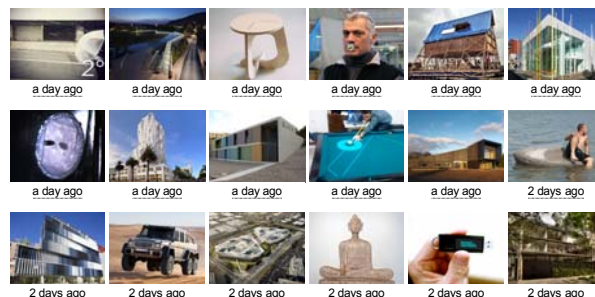
the 'ladybug' nursery school is materially compelling, but has a relatable scale
image © clément guillaume



SOA: gavroche centre for children
paying careful attention to the complexity of the site, the multi-care facility and games library >>



verticality remains a constant aesthetic theme across materials
image © clément guillaume



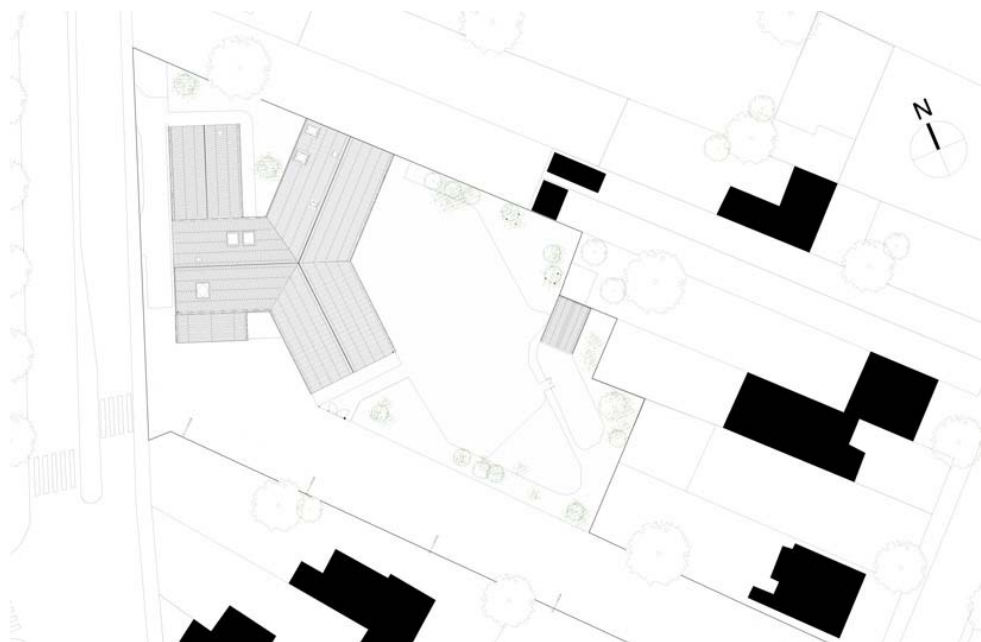


a double height corridor along the southern facade creates an all-weather covered play area
image © clément guillaume

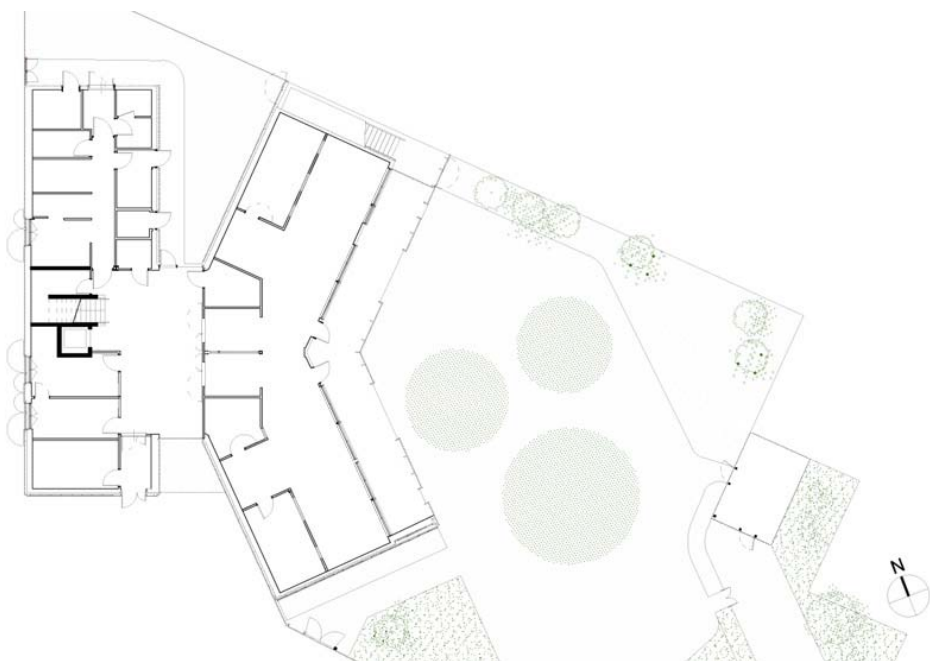


image © clément guillaume

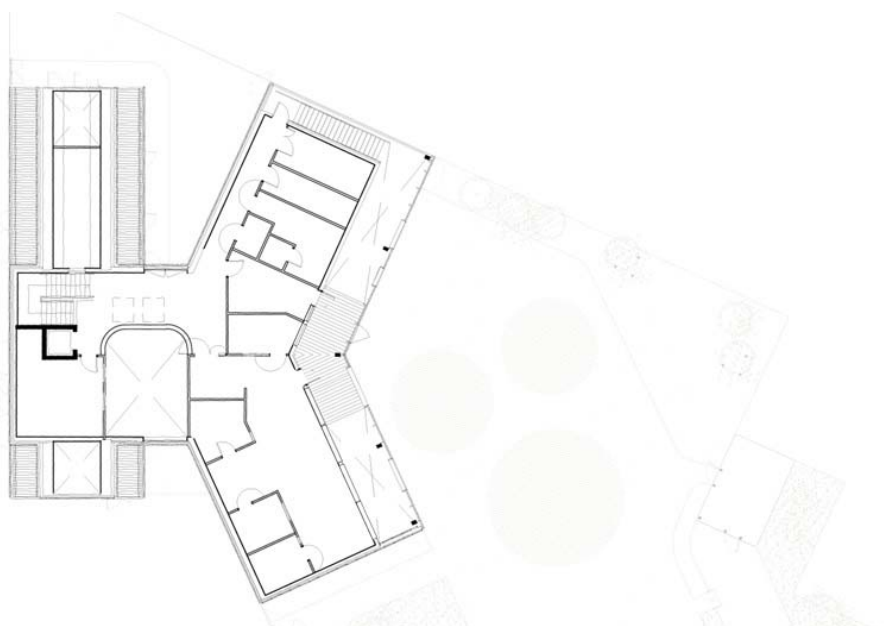
drawings



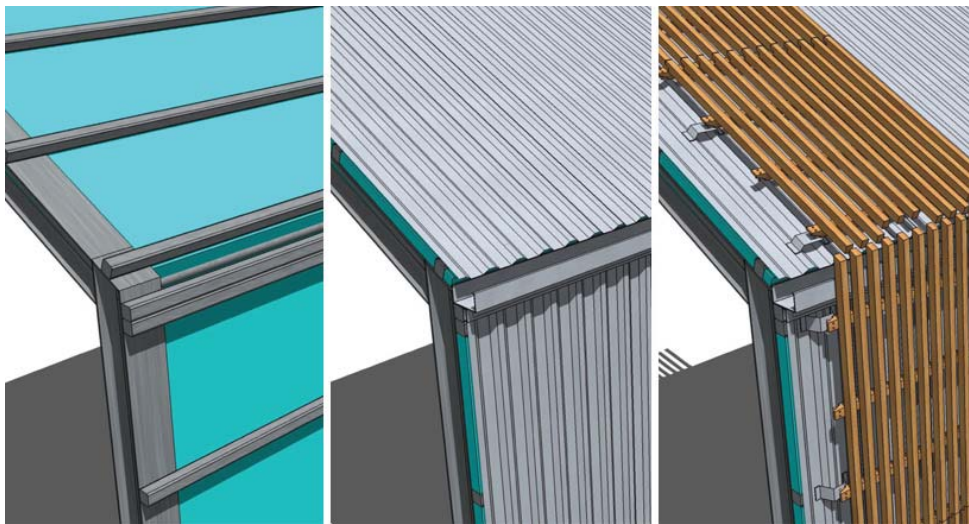
site plan



floor plan level 0



floor plan level 1



detail of cladding assembly

project info:**location:** rue d'argenteuil, saint-gratien**client:** city of saint-gratien**team:** SOA (architect), gruet (engineering) **orféa (acoustics)**, atelier jours (landscape design)**built area:** 691 m²**environmental performances:** BBC, RT 2005**use:** education



mar 04, 2013

original content

banks of the river meurthe by atelier cite

READER'S SUBMISSION

Careful management of the river bank's vegetation encourages the natural stability of the banks, limits erosion and allow for diversification of the specific local flora.

bridges (46 articles)

Tweet 13 Like 1 2 0



mar 04, 2013

original content

NLE architects: floating school in makoko

ARCHITECTURE

The buoyant school is the first part to a three-phase plan that will create an entirely floating community in response to flood zone solutions around the world.

floating architecture and artificial islands (30 articles)
schools (98 articles)

Tweet 48 Like 95 52 0

RECOMMENDED READING



NLE architects: floating school in makoko

the buoyant school is the first part to a three-phase plan that will create an entirely floating >>



tullhus bridge by erik andersson architects

located in norrköping, the snow-free bridge takes pedestrians and cyclists from stromsholmen to the >>



louis kahn - the power of architecture

the first comprehensive exhibition of the late louis kahn's work in over two decades uses a collective >>



act_romeigialli: green box renovation in italy

the garage re-design is cloaked in a shroud of deciduous perennials whose design changes with the >>



mup-arq: viura hotel

offering the latest in hospitality, the hillside hotel creates a series of green rooftop terraces >>



mar 04, 2013

original content

emmanuelle moureaux: sugamo shinkin bank ekoda

ARCHITECTURE

centered around a 'rainbow fall', colorful, three dimensional masts puncture the air and boldly layer in order to lend a joyfulness and gaiety to the bank.

bamboo (67 articles)

emmanuelle moureaux (17 articles)

Tweet 47 Like 44 31 0



mar 04, 2013

original content

frank gehry to build ocean avenue project in santa monica

ARCHITECTURE

the proposal, if approved, will be gehry's first home-town building in 25 years, adding a prominent new hotel to the santa monica skyline.

frank gehry (34 articles)

Tweet 50 Like 24 18 0

shop buy design originals here online!



mar 04, 2013

original content

el lasso community centre by romera and ruiz architects

READER'S SUBMISSION

located in a neglected neighborhood of las palmas, the community center negotiates with the existing street and valley topography to define form and a space.

Tweet 20 Like 20 35 0

SHOW NAVIGATION



mar 04, 2013

original content

aart architects: hindsgavl nature reserve, denmark

ARCHITECTURE

large windows and doors create a threshold between the interior and exterior, a relationship strengthened through the contrasting use of timber cladding from the outside to the inside.

Tweet 35 Like 20 12 0



documents laptop case for mac

from taiwan

each case comes with one random icon badge
USD 30 | [info](#)



airframe

from korea

have a lofty window seat view
USD 47 | [info](#)



my document & my photo

from taiwan

fabric cases for your laptop and camera
USD 30 | [info](#)



adhesive maple bookmarks

from korea

bookmark / memo pad stickers
USD 19 | [info](#)

designboom @ 2012

ABOUT US

ADVERTISE

CONTACT US

COPYRIGHT INFO

PRIVACY

NEWSLETTER





mar 03, 2013

eden apartments by tony owen partners

READER'S SUBMISSION

the urban infill project is located in a varied and complex part of the sydney cityscape - visible from many vantage points.

Tweet 28 Like 8 34 0



mar 03, 2013

the transforming landscape of silicon valley

ARCHITECTURE

gensler's release of two renderings for the NVIDIA headquarters is the latest in a series of large-scale campuses in the burgeoning architectural hotspot.

apple (6 articles)

frank gehry (34 articles)

Tweet 47 Like 24 14 1



mar 03, 2013

la proyecteria: calderon de la barca 71, mexico

ARCHITECTURE

seamlessly interlocked concrete masses contain various apartments with unique layouts, views, and characteristics sharing an open-air courtyard.

Tweet 62 Like 20 56 0



mar 02, 2013

lode architecture: g house, normandy, france

ARCHITECTURE

at the mouth of seine sits the slate-shingled graphic silhouette of a holiday home of simple volumes, sharp edges and walls of richly grained wood.

lode architecture (1 articles)

Tweet 29 Like 31 34 1

BRIDGES



hringbraut footbridges

studio granda designed a series of three pedestrian bridges near the reykjavik airport



inFORM studio: bagley pedestrian bridge

this new pedestrian connection adjacent to the united states and canadian border unifies the immediate (read more)



planning korea: paik nam june media bridge

featuring a number of public facilities such as a museum, library, and an IT complex mall, the 1090 (read more)



castleford bridge by mcdowell + bendetti

stretching 8 kilometers, this new pedestrian bridge connects the northern and southern residents of (read more)



yoav messer architects ltd: EContainer bridge, israel

the bridge uses all of the shipping container's characteristics to create an ecologically sensitive, (read more)

RECOMMENDED READERS



floating islands by AB concrete design

attached to a concrete block under the surface, the floating islands serve as relaxing points in lakes (read more)



tullhus bridge by erik andersson architects

located in norrköping, the snow-free bridge takes pedestrians and cyclists from stromsholmen to the (read more)



world's first solar powered multi purpose helicopter

a group of masters students at queen mary university of london have sent designboom images of (read more)



lara rios house and atelier by f451 arquitectura

a live/work space in spain is tied to the landscape by a ribbon of green roof and elegant white facets.



ducky furniture set by petteri hakkinen

the designer utilizes birch to conceive a series of ergonomic wooden furniture pieces.



take weather social networking photo

technology | 03.04.13

organized like a post card, the social networking application system combines tradition photo (read more)



arik levy interview

interviews | 03.04.13

designboom: what is the best moment of the day? waking up because I realize the machine works. I'm (read more)

video

see all 1,467

